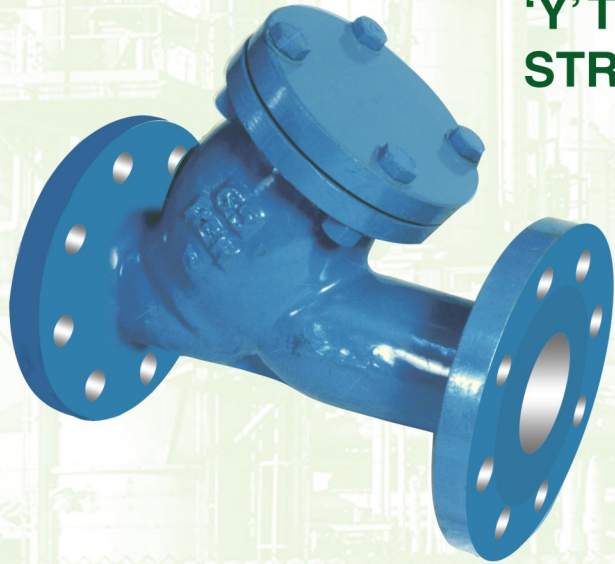
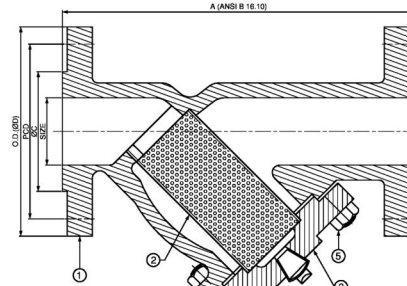




ECONOMICAL , DURABLE , RELIABLE , SUSTAINABLE



'Y' TYPE STRAINER



SECTIONAL DRAWING

REFERENCE

- **Testing Standard** : API 598
 - **Face to Face Dimensions** : ANSI B 16.10
 - **Flange Drilling** : ANSI B 16.5 R.F
 - **Pressure Rating Class** : 150#, 300#
 - **Shell Wall Thickness** : ANSI B 16.34
-
- **Size** : DN25 to DN250
 - **End Connection** : Flange End
 - **Temperature** : -20°C to 400°C
 - **Max Working Pr.** : 40Barg
 - **Application** : Steam / Gas / Air / Liquid / Chemical
 - **Mesh Size** : 40 Mesh

250	622.0	47.8	323.9	444.5	25.4	16	387.4
200	533.0	41.1	269.7	381.0	22.4	12	330.2
150	444.5	36.6	215.9	317.5	22.4	12	269.7
125	400.0	35.0	186.0	279.4	22.4	8	235.0
100	356.0	31.8	157.2	254.0	22.4	8	200.2
80	317.5	28.4	127	209.5	22.4	8	168.1
65	292.0	25.4	104.6	190.5	22.4	8	149.4
50	267.0	22.4	91.9	165.0	19.1	8	127.0
40	241.5	20.6	73.2	155.5	22.4	4	114.3
25	203.0	17.5	51.0	124.0	19.1	4	89.0
SIZE	A	B	ØC	ØD	ØM	N	PCD

CLASS 300 DIMENSIONS

250	622	30.0	324	406.0	25	12	368.0
200	495	28.5	270	343.0	22	8	298.0
150	356	25.0	216	279.0	22	8	241.0
125	356	24.0	186	254.0	22	8	216.0
100	292	24.0	157	229.0	19	8	190.5
80	241	24.0	127	190.5	19	4	152.4
65	216	22.3	105	178.0	19	4	140.0
50	203	19	92	152.0	19	4	120.5
40	165	17.5	73	127.0	16	4	98.5
25	127	1.0	51	108.0	16	4	79.0
SIZE	A	B	ØC	ØD	ØM	N	PCD

CLASS 150 DIMENSIONS

5	STUD WITH NUT	ASTM A 193 Gr B7 /ASTM A 194 Gr 2H	6
4	TRAP	AISI SS410	1
3	COVER	ASTM A216 WCB	1
2	MESH	AISI SS304/316/316G.M.	1
1	BODY	ASTM A216 WCB	1
SR.NO	DESCRIPTION	MATERIAL	QTY.

TESTING PRESSURE

CLASS	HYDROSTATIC		PNEUMATIC TEST	CLASS	R.F.
	BODY	SEAT			
150	30kg/cm ²	22kg/cm ²	8kg/cm ²	150	1.8mm
300	78kg/cm ²	55kg/cm ²	8kg/cm ²	300	1.6mm

:- Manufactured By :-



1128

HARSHAD ENGINEERING WORKS

EW HARSHAD
ENGINEERING WORKS
MANUFACTURER : INDUSTRIAL SAFETY VALVE

S-121 to 124, Vivekanand Estate, Nr. Rakhial Cross Road,
Rakhial, Ahmedabad - 380 023 (Gujarat) INDIA
Phone : +91-079-22745600, (M) 09879355077
Email : hew@hewvalve.com, Web : hewvalve.com